






Worklist: 5011

<u>LAB CASE</u>	<u>ITEM</u>	<u>ITEM TYPE</u>	<u>DESCRIPTION</u>	
M2021-1710	1	BCK	AM 25/AM 26 Blood MultiDrug/THC Screen by LC-QQQ	
M2021-2173	3	BCK	AM 25/AM 26 Blood MultiDrug/THC Screen by LC-QQQ	
P2021-1261	2	BCK	AM 25/AM 26 Blood MultiDrug/THC Screen by LC-QQQ	
P2021-1289	1	BCK	AM 25/AM 26 Blood MultiDrug/THC Screen by LC-QQQ	
P2021-1336	1	BCK	AM 25/AM 26 Blood MultiDrug/THC Screen by LC-QQQ	
P2021-1339	1	BCK	AM 25/AM 26 Blood MultiDrug/THC Screen by LC-QQQ	
P2021-1344	1	BCK	AM 25/AM 26 Blood MultiDrug/THC Screen by LC-QQQ	
P2021-1363	1	BCK	AM 25/AM 26 Blood MultiDrug/THC Screen by LC-QQQ	
P2021-1371	1	BCK	AM 25/AM 26 Blood MultiDrug/THC Screen by LC-QQQ	
P2021-1375	1	BCK	AM 25/AM 26 Blood MultiDrug/THC Screen by LC-QQQ	
P2021-1377	1	BCK	AM 25/AM 26 Blood MultiDrug/THC Screen by LC-QQQ	
P2021-1378	1	BCK	AM 25/AM 26 Blood MultiDrug/THC Screen by LC-QQQ	
P2021-1456	1	BCK	AM 25/AM 26 Blood MultiDrug/THC Screen by LC-QQQ	
P2021-1509	1	CBUK	AM 25/AM 26 Blood MultiDrug/THC Screen by LC-QQQ	
P2021-1517	1	BCK	AM 25/AM 26 Blood MultiDrug/THC Screen by LC-QQQ	
P2021-1529	2	BCK	AM 25/AM 26 Blood MultiDrug/THC Screen by LC-QQQ	
P2021-1589	1	BCK	AM 25/AM 26 Blood MultiDrug/THC Screen by LC-QQQ	
P2021-1590	1	BCK	AM 25/AM 26 Blood MultiDrug/THC Screen by LC-QQQ	
P2021-1593	1	BCK	AM 25/AM 26 Blood MultiDrug/THC Screen by LC-QQQ	
P2021-1609	1	BCK	AM 25/AM 26 Blood MultiDrug/THC Screen by LC-QQQ	
P2021-1611	1	BCK	AM 25/AM 26 Blood MultiDrug/THC Screen by LC-QQQ	

Worklist: 5011

<u>LAB CASE</u>	<u>ITEM</u>	<u>ITEM TYPE</u>	<u>DESCRIPTION</u>	
P2021-1613	1	BCK	AM 25/AM 26 Blood MultiDrug/THC Screen by LC-QQQ	
P2021-1620	1	BCK	AM 25/AM 26 Blood MultiDrug/THC Screen by LC-QQQ	
P2021-1659	1	BCK	AM 25/AM 26 Blood MultiDrug/THC Screen by LC-QQQ	
P2021-1660	1	BCK	AM 25/AM 26 Blood MultiDrug/THC Screen by LC-QQQ	
P2021-1661	1	BCK	AM 25/AM 26 Blood MultiDrug/THC Screen by LC-QQQ	

AM# 25: Multi-Drug Screen in Blood and Urine by LC-MS/MS

Extraction Date: 06/02/2021

Plate lot#: 201206

Mobile phase A: 10mM Amm Form

Instant Buffer I

Blank Blood Lot: Lampire 20L20723

LCMS-QQQ ID: 069901

Analyst: Celena Shrum

Plate Expiration: 06/06/2021

Mobile phase B: 0.1% Formic Acid in MeOH

Ethyl Acetate LC Methanol

Column: Phenomenex Phenyl Hexyl (4.6x50mm, 2.6um)

Pre-Analytic:

- 1. Check levels of mobile phases and needle wash refill as needed. Ensure waste is not full.
- 2. Ensure correct column is installed and begin mobile phase flow allow to equilibrate ~ 30 minutes.

Analytic:

- 1. Remove standards, plate, controls, and samples from cold storage. Allow to reach room temperature.
- 2. Using a calibrated pipette, pipette **250µL blood** into wells of analytical (standards) plate. **Pipette ID: 42**
- 3. Place on shaking incubator at ambient temp., 900rpm for 15 minutes.
- 4. Pipette **250µL 0.5 M ammonium hydroxide** in wells of analytical plate.
- 5. Place on shaking incubator at ambient temp., 900rpm for 15 minutes.
- 6. Transfer **200-450µL of blood+base and** mixture to corresponding wells of SLE+ plate.
Amount transferred: 300µl
- 7. Apply positive pressure for approx. 10-15 seconds (or until no liquid remains on top of sorbent).
(Load at 85-100 PSI- Selector to the right). Manifold ID: 067104
- 8. Wait 5 minutes.
- 9. Add **900uL ethyl acetate**.
- 10. Wait 5 minutes.
- 11. Apply positive pressure for approx. 15 seconds. *(10-15 PSI- Selector to the left).*
- 12. Add **900uL ethyl acetate**.
- 13. Wait 5 minutes.
- 14. Apply positive pressure for approx. 15 seconds. *(10-15 PSI- Selector to the left).*
- 15. Remove plate containing eluate. Place on SPE Dry and evaporate to dryness at approx. 35°C.
- 16. Reconstitute in **100µL 20% LC MeOH** and heat seal plate with foil. Place in autosampler and run worklist.

Post-Analytic

- 1. Open quantitation software and create a new quantitation batch.
- 2. Make necessary changes to integration limits
- 3. Evaluate samples, S/N of primary transition >5 and S/N of secondary transition >3 or evaluation of peak symmetry and resolution. Within +/- 2% or 0.1 min RT of administrative control. Calculated concentration of 5 or greater or 2-5 for discretionary range.
- 4. Did all QCs pass for each analyte? If no, describe issue in comments (below).
- 5. Central File Packet to include: LIMS Worklist, Method Checklist, Calibration and Control Reports

COMMENTS:

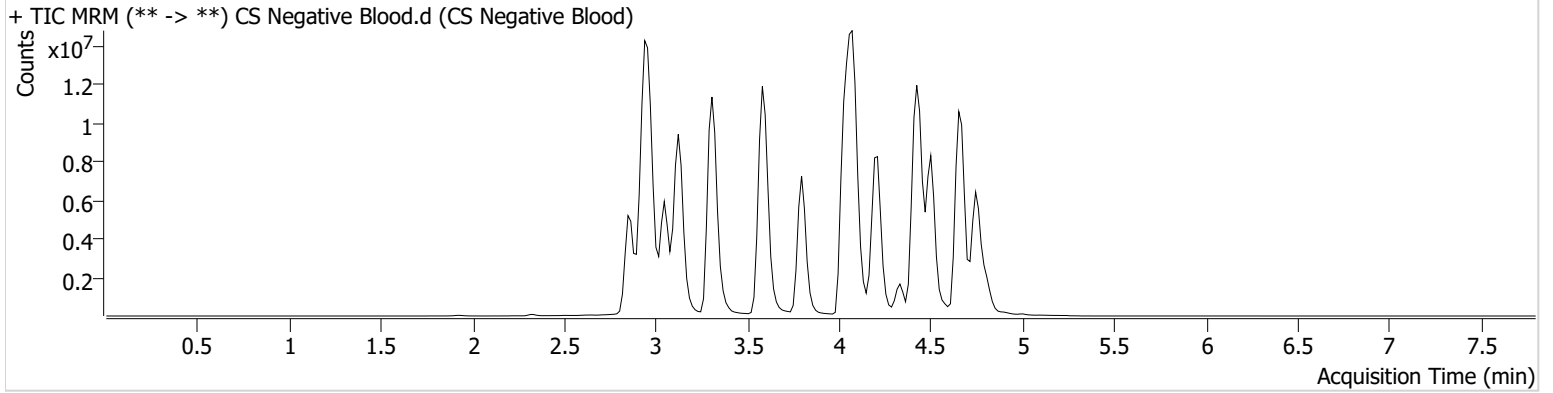
AM #25 Multi-Drug Screen Results



Batch results D:\MassHunter\Data\2021\AM 25-26\060221 AM 25 26 SC\QuantResults\AM 25 CS.batch.bin
Calibration Last Update 6/8/2021 10:24:30 AM

Instrument	Falco (069901)	Data File	CS Negative Blood.d
Type	Sample	Sample	CS Negative Blood
Acq. Method	AM 25 MDS.m	Operator	Celena Shrum
Sample Position	P6-C1	Comment	
Injection Volume	5		
Acq. Date-Time	6/3/2021 3:18:03 AM		
Sample Info.			

Sample Chromatogram



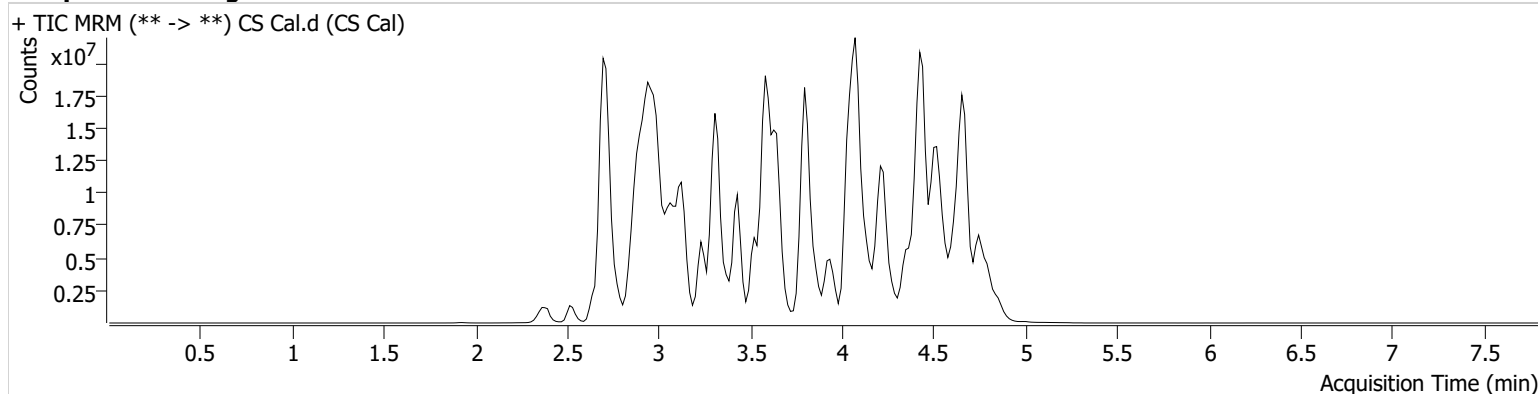
AM #25 Multi-Drug Screen Results



Batch results D:\MassHunter\Data\2021\AM 25-26\060221 AM 25 26 SC\QuantResults\AM 25 CS.batch.bin
Calibration Last Update 6/8/2021 10:24:30 AM

Instrument	Falco (069901)	Data File	CS Cal.d
Type	Cal	Sample	CS Cal
Acq. Method	AM 25 MDS.m	Operator	Celena Shrum
Sample Position	P6-B1	Comment	
Injection Volume	5		
Acq. Date-Time	6/3/2021 3:09:27 AM		

Sample Chromatogram



Name	RT	Resp.	S/N	S/N	ISTD Resp.	Calc. Conc.
6-MAM	2.953	91270	538.31	42775.27	2828826	10.0000
7-aminoclonazepam	3.569	1890225	3279281.55	1681.89	8306547	10.0000
7-aminoflunitrazepam	3.783	3367341	707.44	1103.49	8306547	10.0000
Acetyl Fentanyl	3.964	306850	76.75	123095.22	40383208	10.0000
Acetyl Norfentanyl	2.886	654929	2790.86	924.96	40383208	10.0000
a-hydroxyalprazolam	4.515	651082	236.88	481.85	8306547	10.0000
alpha-hydroxymidazolam	4.606	3493267	650.22	180.20	8306547	10.0000
Alpha-PHP	3.865	5268609	16701.91	952.06	40383208	10.0000
alpha-PVP	3.575	5893374	639.14	4371.82	16487828	10.0000
Alprazolam	4.626	4899680	547.84	1776.20	34973566	10.0000
Amitriptyline	4.461	326505	48.94	48.10	1393902	10.0000
Amphetamine	2.890	6611654	1107.11	1392.75	16487828	10.0000
Benzoylcegonine	3.369	416779	232336.03	109790.40	745362	10.0000
Brompheniramine	4.041	80825	67.80	166.70	42234704	10.0000
Buprenorphine	4.877	804828	33239.29	24969.85	3864105	10.0000
Bupropion	3.834	5222915	428.90	826.45	19929712	10.0000
Carbamazepine	4.234	17038760	705.40	2732.98	1372638	10.0000
Carisoprodol	4.217	2480684	145151.40	189.79	15295225	10.0000
Chlordiazepoxide	4.735	1257798	49.98	673.66	34973566	10.0000
Chlorpheniramine	3.954	6124689	5595.58	5.91	42234704	10.0000
Citalopram	4.071	3037103	405.22	1069015.33	42234704	10.0000
Clomipramine	4.671	369832	854.28	785.99	42234704	10.0000
Clonazepam	4.440	2658445	1273.84	589.00	34973566	10.0000
Clonazolam	4.375	3069076	3368.60	1227973.19	34973566	10.0000
Cocaethylene	3.796	7141297	5373537.18	425199.58	34702216	10.0000
Cocaine	3.598	6731117	5733702.83	781.53	34702216	10.0000
Codeine	2.881	579561	834376.88	994.93	17556844	10.0000
Cyclobenzaprine	4.370	525142	159.64	18.22	1393902	10.0000
Desipramine	4.386	854702	717.56	161.90	1393902	10.0000
Dextromethorphan	4.093	1471669	204.00	177.13	8171388	10.0000
Dextrorphan	3.372	3797237	446.29	1233.39	8171388	10.0000
Diazepam	4.859	2150620	723.83	1315.57	34973566	10.0000
Dihydrocodeine	2.774	1547132	1788.66	653.57	17556844	10.0000
Diphenhydramine	4.047	8344259	99378.95	945.91	42234704	10.0000

AM #25 Multi-Drug Screen Results



Name	RT	Resp.	S/N	S/N	ISTD Resp.	Calc. Conc.
Doxepin	4.184	746971	122.64	57.65	16640913	10.0000
Doxylamine	3.647	14607943	15458932.11	553.06	8171388	10.0000
EDDP	4.076	1624755	287.94	517.80	3640427	10.0000
Estazolam	4.535	11201984	1753.01	2349.76	34973566	10.0000
Etizolam	4.636	737004	9208.97	2904329.55	34973566	10.0000
Fentanyl	4.193	112850	61.26	83091.60	8577146	10.0000
Flualprazolam	4.484	1906685	666292.07	1659786.68	34973566	10.0000
Flunitrazepam	4.564	5624776	1034.88	1541.79	34973566	10.0000
Fluoxetine	4.335	351885	336.44	15.28	670749	10.0000
Flurazepam	4.267	3699384	2160373.80	809908.65	34973566	10.0000
Hydrocodone	3.079	2523552	3231.55	2801.45	17556844	10.0000
Hydromorphone	2.519	2148334	44918.92	3246330.81	219072	10.0000
Imipramine	4.414	1432392	25948.27	207.54	1393902	10.0000
Ketamine	3.666	6368717	1166.99	135.21	22987263	10.0000
Lamotrigine	3.618	438734	837.42	3814.77	42234704	10.0000
Levamisole	3.009	4263757	627.80	190.52	34702216	10.0000
Levetiracetam	2.659	2362194	1214.77	1092.80	42234704	10.0000
Lorazepam	4.439	1070516	519.01	∞	34973566	10.0000
Maprotiline	4.461	235066	54.63	46.53	1393902	10.0000
MDA	3.010	4739784	944.74	898.62	37443467	10.0000
MDEA	3.238	6575051	1505.99	307.39	37443467	10.0000
MDMA	3.085	8728611	468.78	592.66	37443467	10.0000
Meperidine	3.634	3139192	433.78	313.50	8171388	10.0000
Meprobamate	3.668	1477304	933.33	625.30	15295225	10.0000
Methadone	4.395	3935424	351.97	1694.20	3640427	10.0000
Methamphetamine	2.996	10975211	940.80	519.47	37443467	10.0000
Methocarbamol	3.573	795976	357.25	560.09	3640427	10.0000
Methylphenidate	3.528	15496700	1460.92	314.07	29646225	10.0000
Metoprolol	3.433	1113452	168.83	931.28	8171388	10.0000
Midazolam	4.776	691151	758.75	14727.63	34973566	10.0000
Mirtazapine	4.140	3574874	1930727.50	1836.51	8171388	10.0000
Mitragynine	4.282	210023	73675.08	388877.18	8171388	10.0000
Morphine	2.352	441527	∞	327.13	219072	10.0000
Norbuprenorphine	3.853	83692	45236.97	21399.48	3864105	10.0000
Nordiazepam	4.707	2922610	257206.80	523.81	34973566	10.0000
Norfentanyl	3.329	11562394	15533246.91	923.64	40383208	10.0000
Norhydrocodone	2.929	57894	14.30	40.05	219072	10.0000
Norketamine	3.775	1080148	287.49	78355.98	22987263	10.0000
Normeperidine	3.605	2315052	656.21	584.31	42234704	10.0000
Noroxycodone	2.881	1949752	256.87	208.10	22987263	10.0000
Nortriptyline	4.432	137667	86.84	115.37	1393902	10.0000
O-desmethyl-tramadol	2.915	12503004	1445.05	376.57	42234704	10.0000
Olanzapine	3.490	54887	57065.91	37.26	1372638	10.0000
Oxazepam	4.521	5048716	1268.16	384.88	23637416	10.0000
Oxycodone	2.939	4483941	632.33	669.50	22987263	10.0000
Oxymorphone	2.378	2065024	410.86	1500.21	219072	10.0000
Paroxetine	4.362	49625	67.80	35049.41	670749	10.0000
Phenazepam	4.636	4708790	1757258.85	4635.42	34973566	10.0000
Phencyclidine	3.926	6711290	11622.34	239.96	8171388	10.0000
Phentermine	3.149	2656116	168.27	39.91	29646225	10.0000
Phenytoin	4.126	2366272	752.99	828.01	1372638	10.0000
Promethazine	4.383	1798082	2126.81	42.25	42234704	10.0000
Pseudoephedrine	2.720	59357797	19267.32	770.85	37443467	10.0000
Quetiapine	4.604	3627913	1115.84	17069.46	45326140	10.0000
Sertraline	4.581	114311	1027.05	149.53	670749	10.0000
Sufentanil	4.604	61570	67782.36	5936.82	40383208	10.0000
Tapentadol	3.438	8743989	1732.62	1570.75	22987263	10.0000
Temazepam	4.673	7971781	1037.12	320.46	34973566	10.0000
Tramadol	3.433	14933468	1645.82	124.61	42234704	10.0000
Trazodone	4.788	3565190	330.28	196.07	16640913	10.0000

AM #25 Multi-Drug Screen Results



Name	RT	Resp.	S/N	S/N	ISTD Resp.	Calc. Conc.
Venlafaxine	3.800	10765526	851.23	972.05	670749	10.0000
Zaleplon	4.351	5054644	1794.54	2775.45	45326140	10.0000
Zolpidem	4.442	14396769	7033712.23	77567.50	45326140	10.0000
Zopiclone	4.328	825209	790867.70	3462.04	4250207	10.0000

AM# 26: Screening of THC and Metabolites in Blood and Urine by LC-MS/MS

Extraction Date: 06/02/2021

Analyst: Celena Shrum

Plate lot#: IDP-108-2-210412

Plate Expiration: 10/12/2021

Mobile phase A: 0.1% Formic Acid in LCMS Water

Mobile phase B: 0.1% Formic acid in Acetonitrile

Blank Blood Lot: Lampire 20L20723

Column: Phenomenex Phenyl Hexyl (4.6x50mm, 2.6um)

LCMS-QQQ ID: 069901

Pre-Analytic:

- 1. Check levels of mobile phases and needle wash refill as needed. Ensure waste is not full.
- 2. Ensure correct column is installed and begin mobile phase flow allow to equilibrate ~ 30 minutes.

Analytic:

- 1. Remove standards, plate, controls, and samples from cold storage. Allow to reach room temperature.
- 2. Using a calibrated pipette, add **1000µl blood (calibrated pipette)** into the appropriate wells of analytical (standards) plate. **Pipette ID: #42**
- 3. Place on shaking incubator at ambient temp., 900rpm for 15 minutes.
- 4. Pipette **500µL 0.1% formic acid in water blood sample** of analytical plate.
- 5. Place on shaking incubator at ambient temp., 900rpm for 15 minutes.
- 6. Transfer **800µL of blood+acid** mixture to corresponding wells of SLE+ plate.
- 7. Apply positive pressure for approx. 10-15 seconds (or until no liquid remains on top of sorbent). **(Load at 85-100 PSI- Selector to the right)** Manifold ID: 067104
- 8. Wait 5 minutes.
- 9. Add **2.25mL MTBE. (Add in 3 increments of 750uL)**
- 10. Wait 5 minutes.
- 11. Apply positive pressure for approx. 15 seconds. **(10-15 PSI- Selector to the left).**
- 12. Add **2.25mL Hexane. (Add in 3 increments of 750uL)**
- 13. Wait 5 minutes.
- 14. Apply positive pressure for approx. 15 seconds. **(10-15 PSI- Selector to the left).**
- 15. Remove plate containing eluate. Place on SPE Dry and evaporate to dryness at approx. 35°C. **SPE Dry ID: 067103**
- 16. Reconstitute in **100µL 100% MeOH** and heat seal plate with foil. Place in autosampler and run worklist.

Post-Analytic

- 1. Create batch and process data.
- 2. Make any necessary integration changes, R² values ≥0.98 for each analyte
- 3. RT +/- 2% or 0.100 min, whichever is greater
- 4. Confirmation testing on case samples with a response for THC and OH-THC of 3ng/mL or greater and/or Carboxy-THC at 10ng/mL or greater (analyst discretion between 5-10ng/mL) may be pursued.
- 5. Did all QCs pass for each analyte? (if not, describe in comments section)
- 6. Central File Packet to include: LIMS Worklist, Method Checklist, Calibration and Control Reports

COMMENTS:

	1	2	3	4	5	6
a	cal 1ng	Blood NC	P2021-1363-1	P2021-1529-2	P2021-1659-1	
b	cal 3 ng	M2021-1710-1	P2021-1371-1	P2021-1589-1	P2021-1660-1	
c	cal 5 ng	M2021-2173-3	P2021-1375-1	P2021-1590-1	P2021-1661-1	
d	cal 10ng	P2021-1261-2	P2021-1377-1	P2021-1593-1		
e	cal 25 ng	P2021-1289-1	P2021-1378-1	P2021-1609-1		
f	cal 50 ng	P2021-1336-1	P2021-1456-1	P2021-1611-1		
g	cal 100 ng	P2021-1339-1	P2021-1509-1	P2021-1613-1		
h	QC 1	P2021-1344-1	P2021-1517-1	P2021-1620-1		

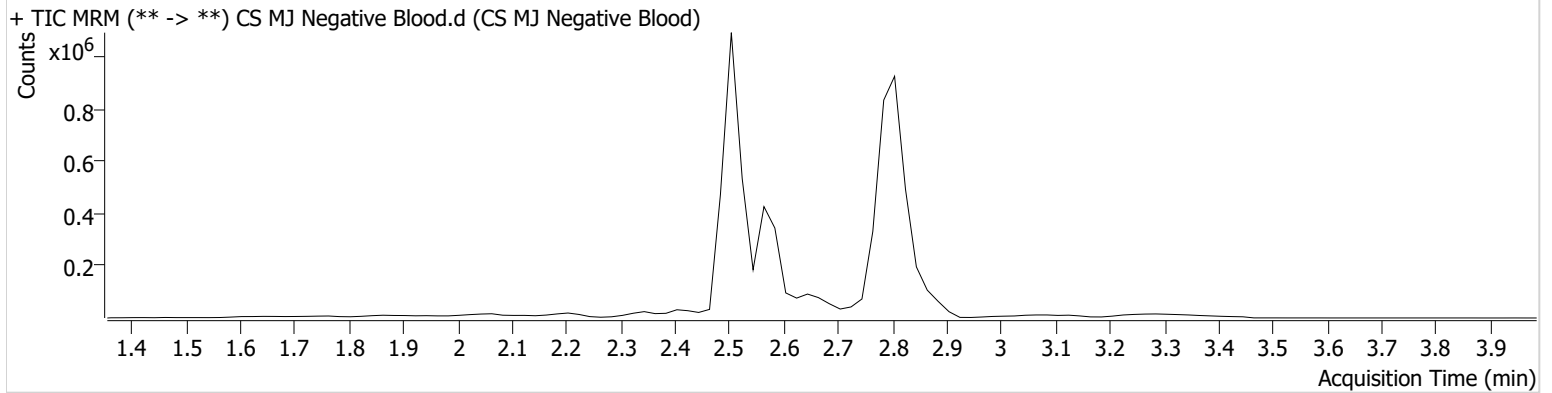
AM #26 Cannabinoids Screen Results



Batch results D:\MassHunter\Data\2021\AM 25-26\060221 AM 25 26 SC\QuantResults\AM 26 CS.batch.bin
Calibration Last Update 6/8/2021 10:26:09 AM

Instrument	Falco (069901)	Data File	CS MJ Negative Blood.d
Type	Sample	Sample	CS MJ Negative Blood
Acq. Method	AM 26 THCS.m	Operator	Celena Shrum
Sample Position	P5-A2	Comment	
Injection Volume	10		
Acq. Date-Time	6/2/2021 11:09:28 PM		
Sample Info.			

Sample Chromatogram



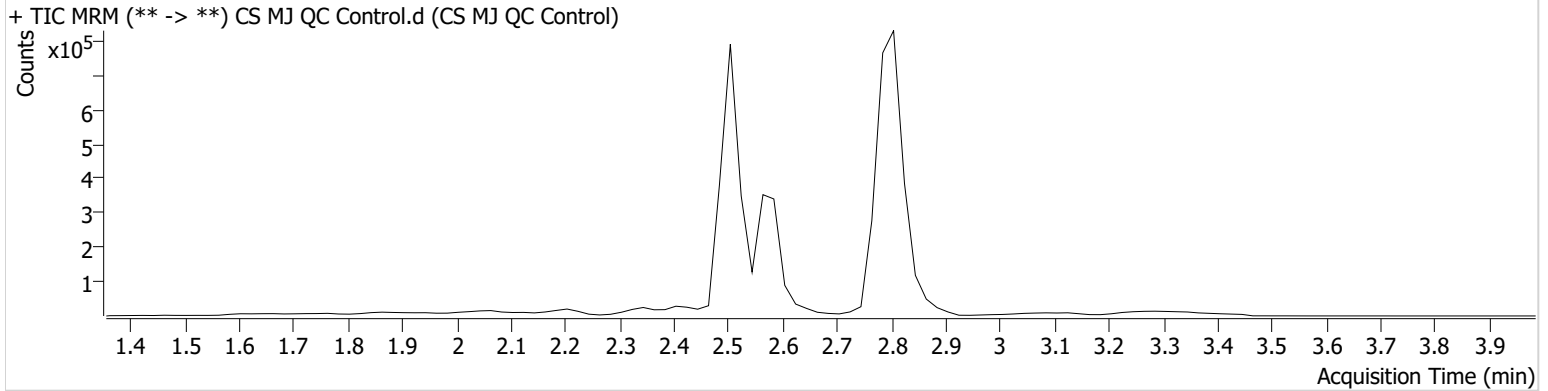
AM #26 Cannabinoids Screen Results



Batch results D:\MassHunter\Data\2021\AM 25-26\060221 AM 25 26 SC\QuantResults\AM 26 CS.batch.bin
Calibration Last Update 6/8/2021 10:26:09 AM

Instrument	Falco (069901)	Data File	CS MJ QC Control.d
Type	Sample	Sample	CS MJ QC Control
Acq. Method	AM 26 THCS.m	Operator	Celena Shrum
Sample Position	P5-H1	Comment	
Injection Volume	10		
Acq. Date-Time	6/2/2021 10:56:24 PM		
Sample Info.			

Sample Chromatogram



Name	RT	Resp.	ISTD Resp.	Final Conc.
THC	2.859	3164	72021	4.9971 ng/ml
THC-COOH	2.587	130977	536801	16.8851 ng/ml
THC-OH	2.514	15853	1775568	4.6940 ng/ml

CS

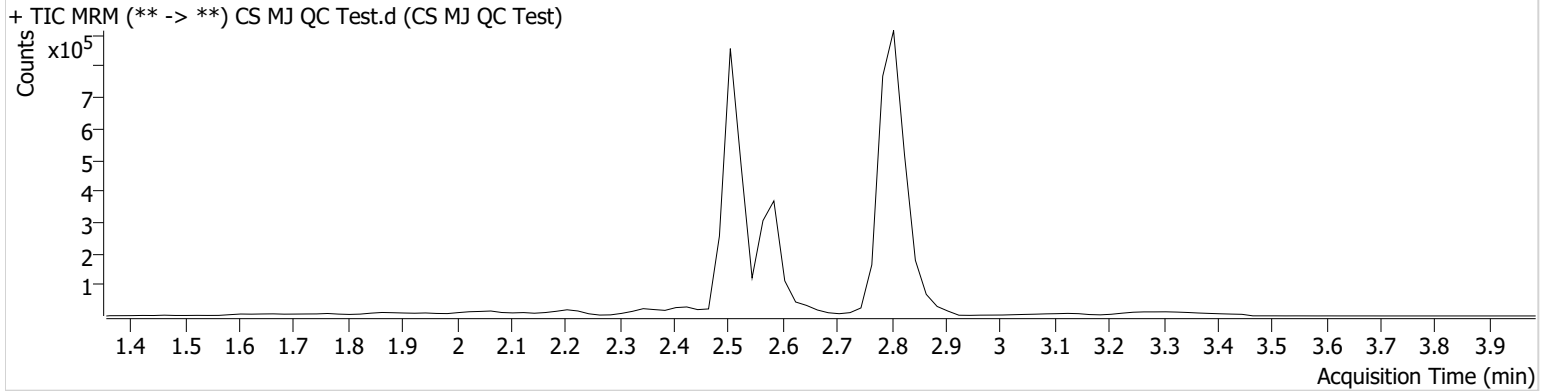


AM #26 Cannabinoids Screen Results

Batch results D:\MassHunter\Data\2021\AM 25-26\060221 AM 25 26 SC\QuantResults\AM 26 CS.batch.bin
Calibration Last Update 6/8/2021 10:26:09 AM

Instrument	Falco (069901)	Data File	CS MJ QC Test.d
Type	Sample	Sample	CS MJ QC Test
Acq. Method	AM 26 THCS.m	Operator	Celena Shrum
Sample Position	P5-H1	Comment	
Injection Volume	10		
Acq. Date-Time	6/3/2021 2:06:48 AM		
Sample Info.			

Sample Chromatogram

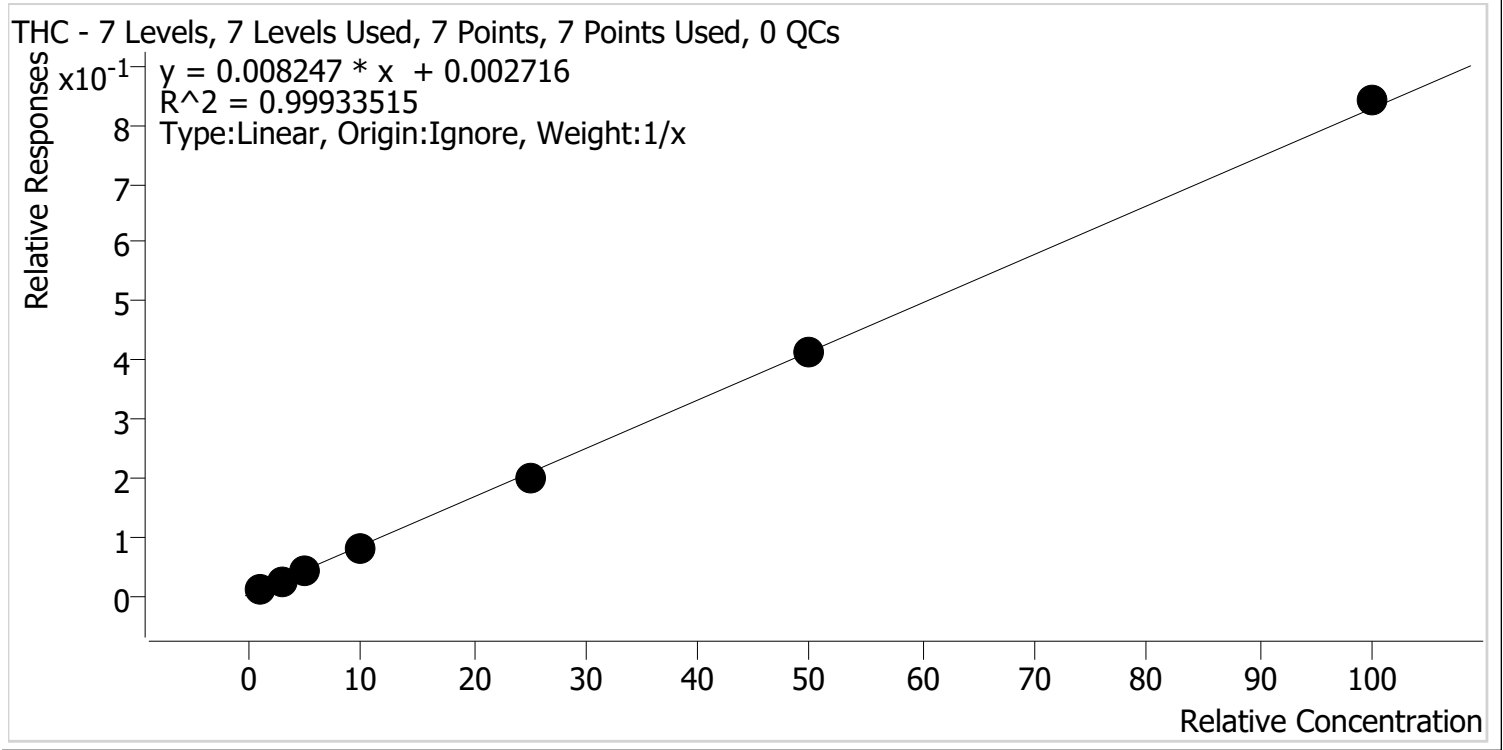


Name	RT	Resp.	ISTD Resp.	Final Conc.
THC	2.859	3315	78823	4.7703 ng/ml
THC-COOH	2.587	116376	527072	15.3443 ng/ml
THC-OH	2.514	14176	1882165	3.8546 ng/ml



AM #26 Cannabinoids Screen Calibration Curve Report

Batch results D:\MassHunter\Data\2021\AM 25-26\060221 AM 25 26 SC\QuantResults\AM 26 CS.batch.bin
Last Cal. Update 6/8/2021 10:26 AM
Analyst Name ISP\datastor
Analyte THC **Internal Standard** THC-D3

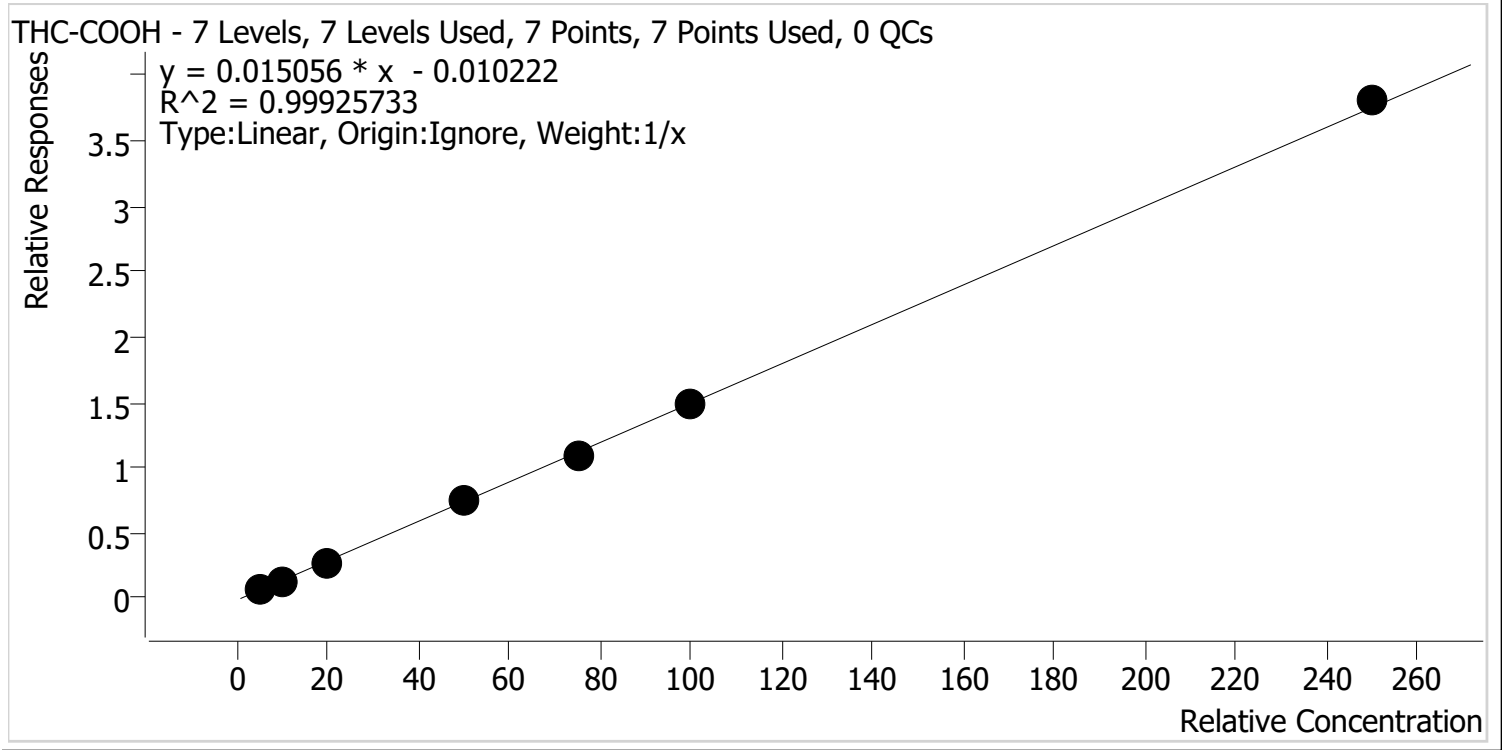


Sample	Level	Enabled	Expected Concentration	Final Concentration	Accuracy
CS MJ Cal 1	1	✓	1.0	1.1	113.7
CS MJ Cal 2	2	✓	3.0	2.9	97.0
CS MJ Cal 3	3	✓	5.0	4.8	96.7
CS MJ Cal 4	4	✓	10.0	9.4	94.4
CS MJ Cal 5	5	✓	25.0	24.2	96.8
CS MJ Cal 6	6	✓	50.0	49.9	99.7
CS MJ Cal 7	7	✓	100.0	101.6	101.6



AM #26 Cannabinoids Screen Calibration Curve Report

Batch results D:\MassHunter\Data\2021\AM 25-26\060221 AM 25 26 SC\QuantResults\AM 26 CS.batch.bin
Last Cal. Update 6/8/2021 10:26 AM
Analyst Name ISP\datastor
Analyte THC-COOH **Internal Standard** THC-COOH-D9

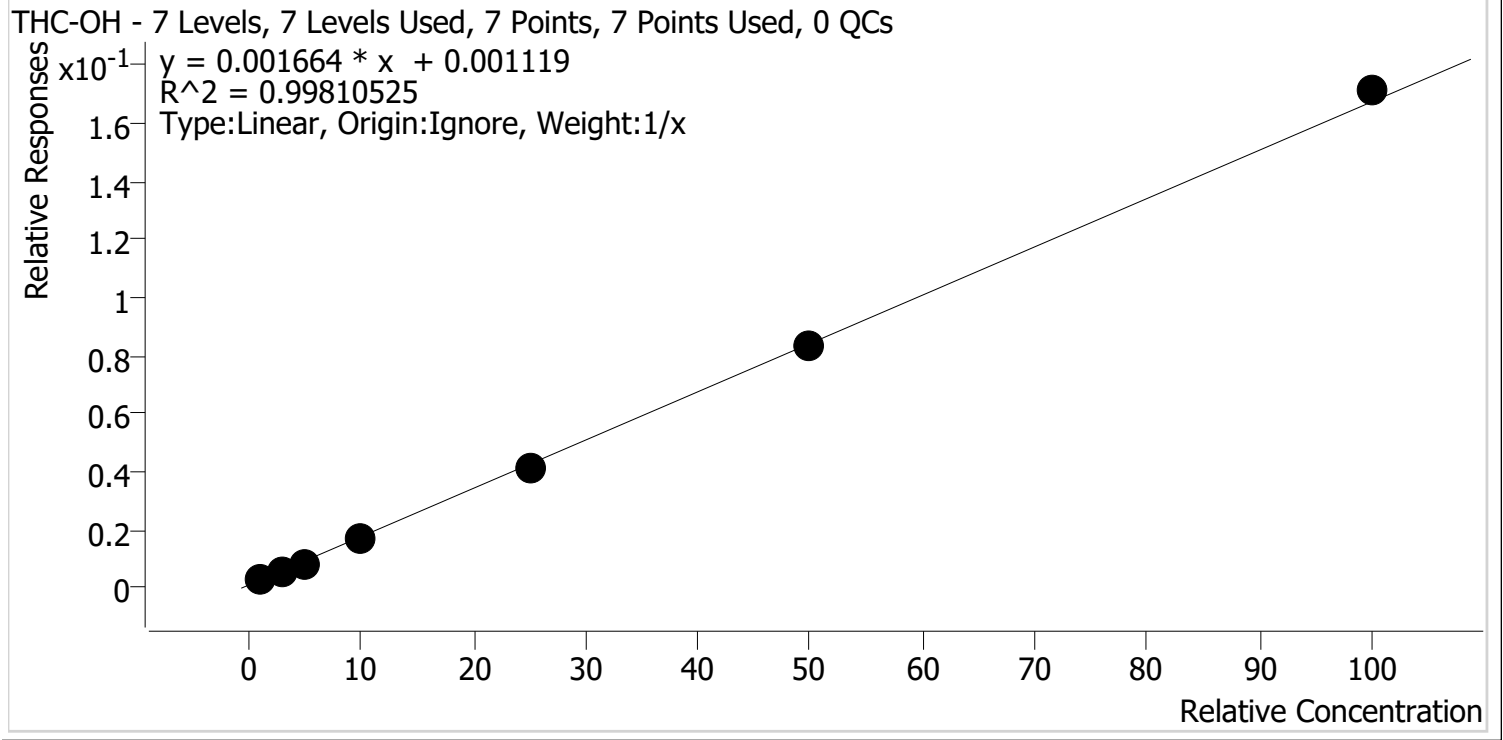


Sample	Level	Enabled	Expected Concentration	Final Concentration	Accuracy
CS MJ Cal 1	1	✓	5.0	5.7	113.9
CS MJ Cal 2	2	✓	10.0	9.4	93.8
CS MJ Cal 3	3	✓	20.0	18.8	94.1
CS MJ Cal 4	4	✓	50.0	49.6	99.3
CS MJ Cal 5	5	✓	75.0	73.6	98.2
CS MJ Cal 6	6	✓	100.0	99.3	99.3
CS MJ Cal 7	7	✓	250.0	253.6	101.4



AM #26 Cannabinoids Screen Calibration Curve Report

Batch results D:\MassHunter\Data\2021\AM 25-26\060221 AM 25 26 SC\QuantResults\AM 26 CS.batch.bin
Last Cal. Update 6/8/2021 10:26 AM
Analyst Name ISP\datastor
Analyte THC-OH **Internal Standard** THC-OH-D3



Sample	Level	Enabled	Expected Concentration	Final Concentration	Accuracy
CS MJ Cal 1	1	✓	1.0	1.3	129.6
CS MJ Cal 2	2	✓	3.0	2.6	86.5
CS MJ Cal 3	3	✓	5.0	4.4	87.9
CS MJ Cal 4	4	✓	10.0	9.9	98.6
CS MJ Cal 5	5	✓	25.0	24.0	96.0
CS MJ Cal 6	6	✓	50.0	49.6	99.1
CS MJ Cal 7	7	✓	100.0	102.3	102.3

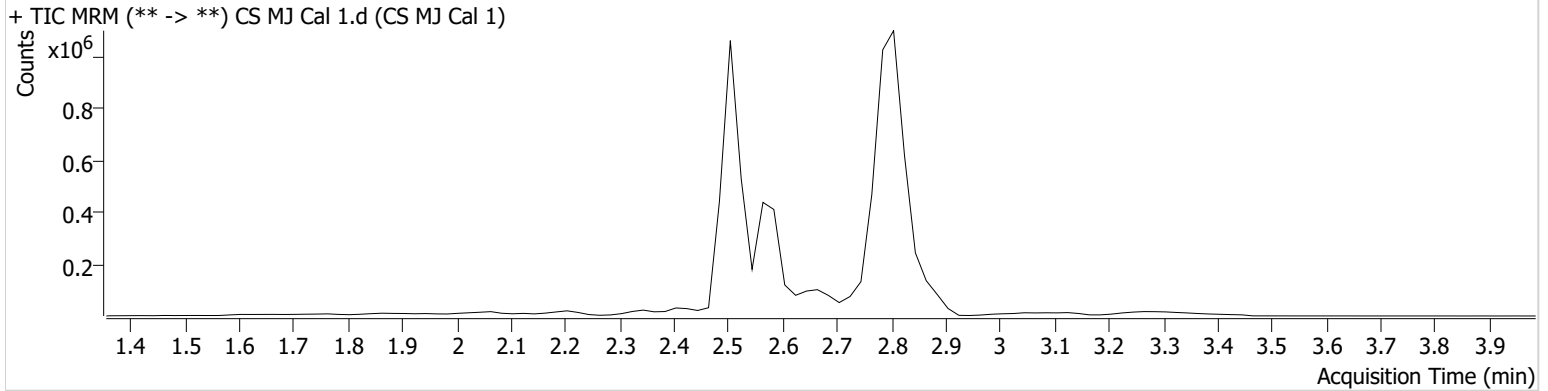
AM #26 Cannabinoids Screen Results



Batch results D:\MassHunter\Data\2021\AM 25-26\060221 AM 25 26 SC\QuantResults\AM 26 CS.batch.bin
Calibration Last Update 6/8/2021 10:26:09 AM

Instrument	Falco (069901)	Data File	CS MJ Cal 1.d
Type	Cal	Sample	CS MJ Cal 1
Acq. Method	AM 26 THCS.m	Operator	Celena Shrum
Sample Position	P5-A1	Comment	
Injection Volume	10		
Acq. Date-Time	6/2/2021 10:10:36 PM		

Sample Chromatogram



Name	RT	Resp.	ISTD Resp.	Final Conc.	
THC	2.859	1445	119434	1.1374 ng/ml	Low
THC-COOH	2.587	59500	787784	5.6955 ng/ml	
THC-OH	2.574	8338	2546722	1.2956 ng/ml	Low

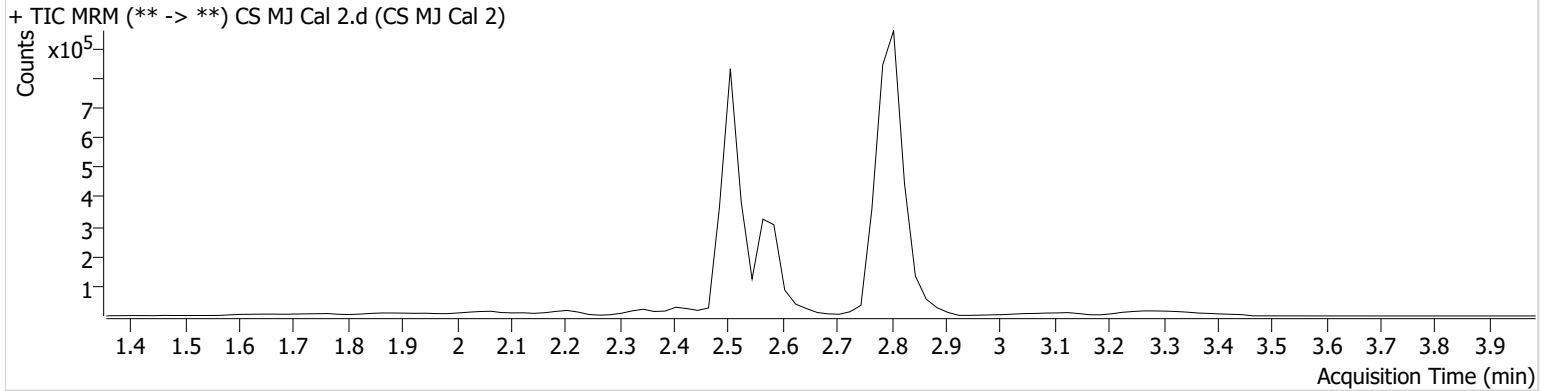
AM #26 Cannabinoids Screen Results



Batch results D:\MassHunter\Data\2021\AM 25-26\060221 AM 25 26 SC\QuantResults\AM 26 CS.batch.bin
Calibration Last Update 6/8/2021 10:26:09 AM

Instrument	Falco (069901)	Data File	CS MJ Cal 2.d
Type	Cal	Sample	CS MJ Cal 2
Acq. Method	AM 26 THCS.m	Operator	Celena Shrum
Sample Position	P5-B1	Comment	
Injection Volume	10		
Acq. Date-Time	6/2/2021 10:17:17 PM		
Sample Info.			

Sample Chromatogram



Name	RT	Resp.	ISTD Resp.	Final Conc.	
THC	2.839	2100	78563	2.9113 ng/ml	Low
THC-COOH	2.587	77784	593606	9.3823 ng/ml	
THC-OH	2.514	10351	1903624	2.5959 ng/ml	Low

CS

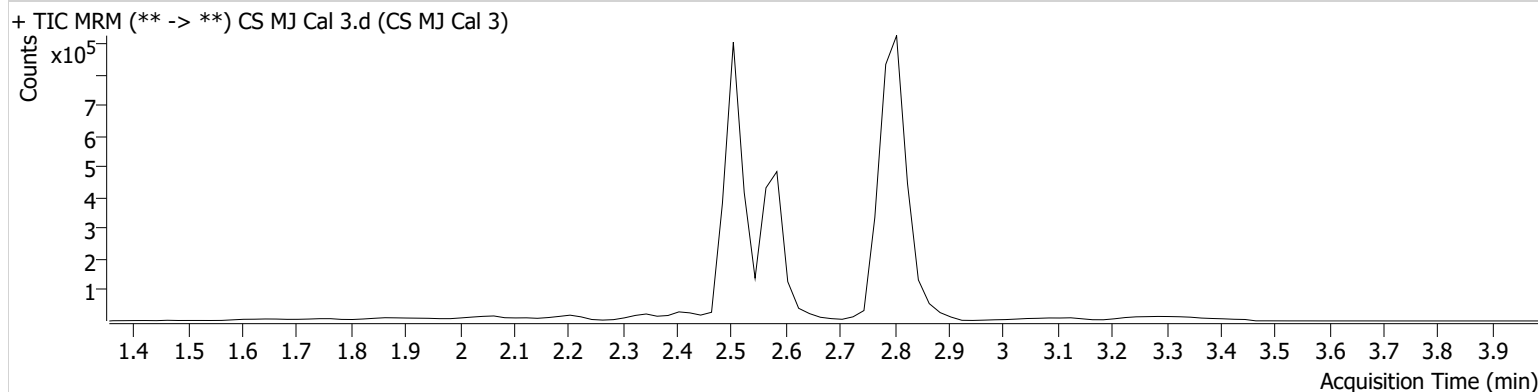


AM #26 Cannabinoids Screen Results

Batch results D:\MassHunter\Data\2021\AM 25-26\060221 AM 25 26 SC\QuantResults\AM 26 CS.batch.bin
Calibration Last Update 6/8/2021 10:26:09 AM

Instrument	Falco (069901)	Data File	CS MJ Cal 3.d
Type	Cal	Sample	CS MJ Cal 3
Acq. Method	AM 26 THCS.m	Operator	Celena Shrum
Sample Position	P5-C1	Comment	
Injection Volume	10		
Acq. Date-Time	6/2/2021 10:23:48 PM		

Sample Chromatogram



Name	RT	Resp.	ISTD Resp.	Final Conc.
THC	2.859	3281	77067	4.8327 ng/ml
THC-COOH	2.587	188787	691039	18.8244 ng/ml
THC-OH	2.514	16955	2011389	4.3943 ng/ml

AM #26 Cannabinoids Screen Results

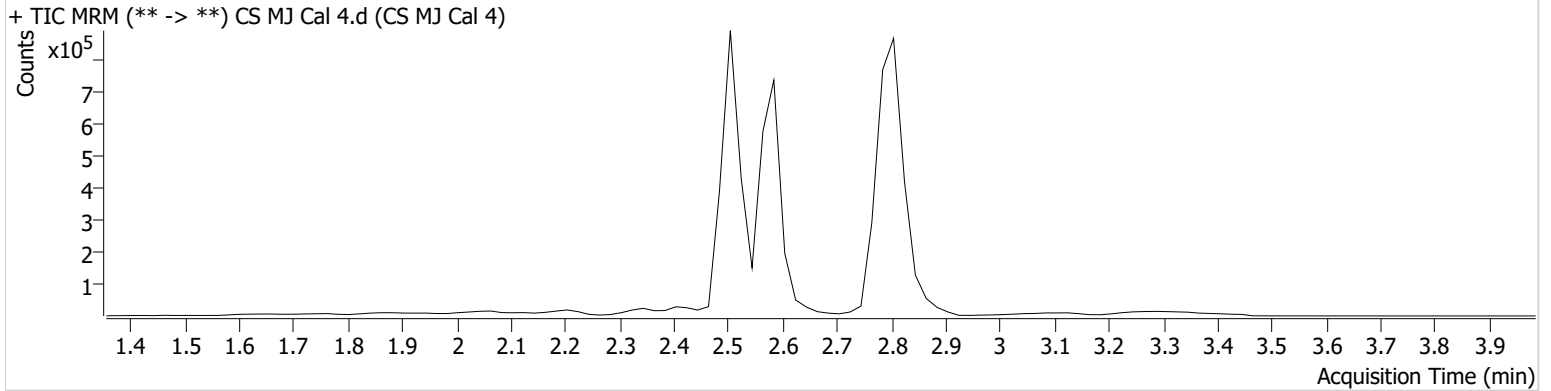


Batch results D:\MassHunter\Data\2021\AM 25-26\060221 AM 25 26 SC\QuantResults\AM 26 CS.batch.bin
Calibration Last Update 6/8/2021 10:26:09 AM

Instrument	Falco (069901)	Data File	CS MJ Cal 4.d
Type	Cal	Sample	CS MJ Cal 4
Acq. Method	AM 26 THCS.m	Operator	Celena Shrum
Sample Position	P5-D1	Comment	
Injection Volume	10		
Acq. Date-Time	6/2/2021 10:30:19 PM		

Sample Info.

Sample Chromatogram



Name	RT	Resp.	ISTD Resp.	Final Conc.
THC	2.859	6078	75429	9.4406 ng/ml
THC-COOH	2.587	438769	595271	49.6364 ng/ml
THC-OH	2.514	33218	1895468	9.8611 ng/ml

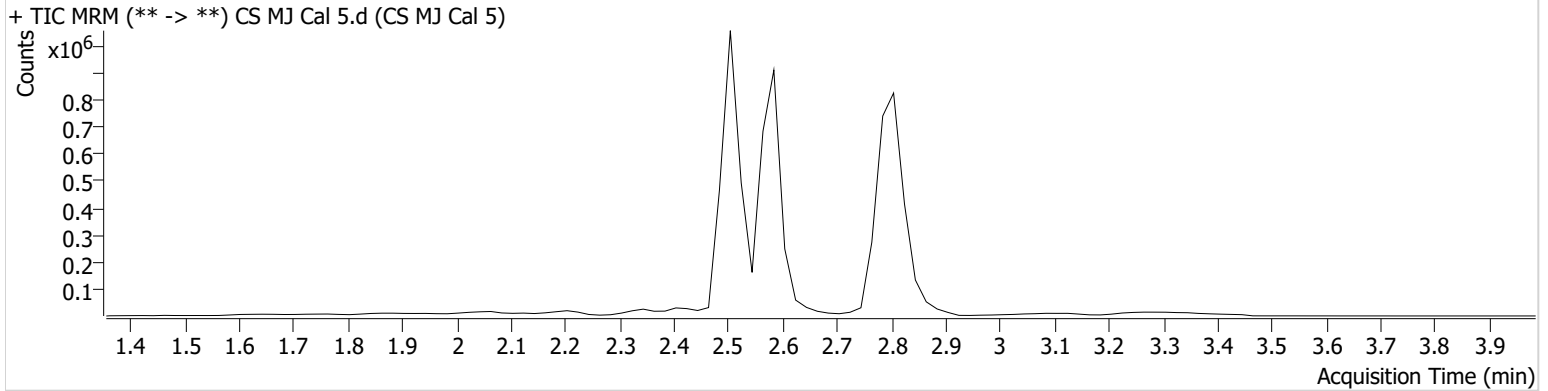
AM #26 Cannabinoids Screen Results



Batch results D:\MassHunter\Data\2021\AM 25-26\060221 AM 25 26 SC\QuantResults\AM 26 CS.batch.bin
Calibration Last Update 6/8/2021 10:26:09 AM

Instrument	Falco (069901)	Data File	CS MJ Cal 5.d
Type	Cal	Sample	CS MJ Cal 5
Acq. Method	AM 26 THCS.m	Operator	Celena Shrum
Sample Position	P5-E1	Comment	
Injection Volume	10		
Acq. Date-Time	6/2/2021 10:36:50 PM		
Sample Info.			

Sample Chromatogram



Name	RT	Resp.	ISTD Resp.	Final Conc.
THC	2.859	14747	72892	24.2010 ng/ml
THC-COOH	2.587	603759	549735	73.6259 ng/ml
THC-OH	2.514	76971	1875197	23.9992 ng/ml

CS

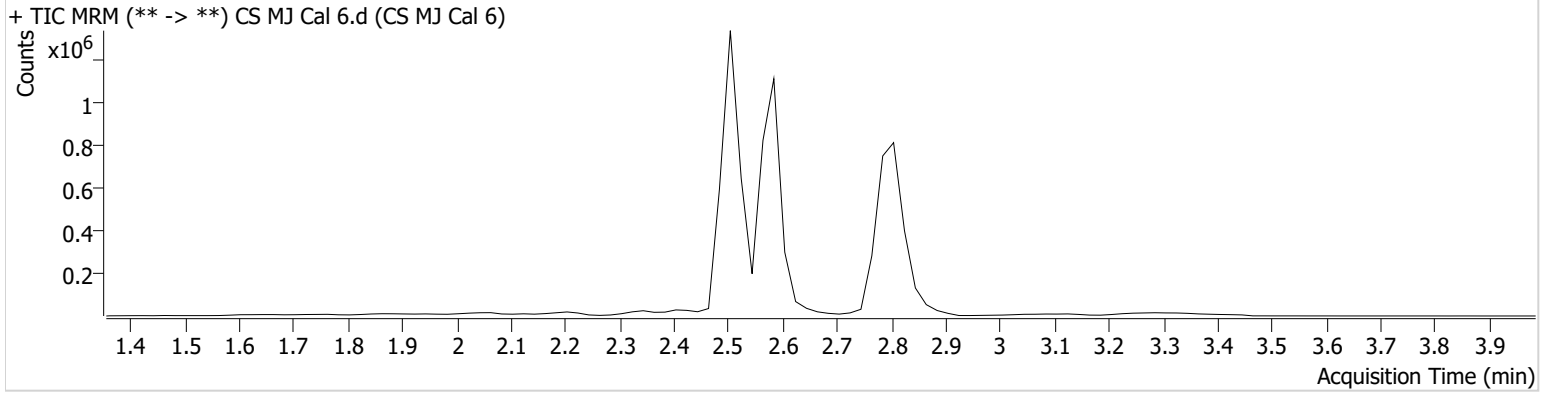


AM #26 Cannabinoids Screen Results

Batch results D:\MassHunter\Data\2021\AM 25-26\060221 AM 25 26 SC\QuantResults\AM 26 CS.batch.bin
Calibration Last Update 6/8/2021 10:26:09 AM

Instrument	Falco (069901)	Data File	CS MJ Cal 6.d
Type	Cal	Sample	CS MJ Cal 6
Acq. Method	AM 26 THCS.m	Operator	Celena Shrum
Sample Position	P5-F1	Comment	
Injection Volume	10		
Acq. Date-Time	6/2/2021 10:43:22 PM		

Sample Chromatogram



Name	RT	Resp.	ISTD Resp.	Final Conc.
THC	2.859	27986	67592	49.8746 ng/ml
THC-COOH	2.587	792323	533702	99.2843 ng/ml
THC-OH	2.514	156654	1874438	49.5603 ng/ml

CS

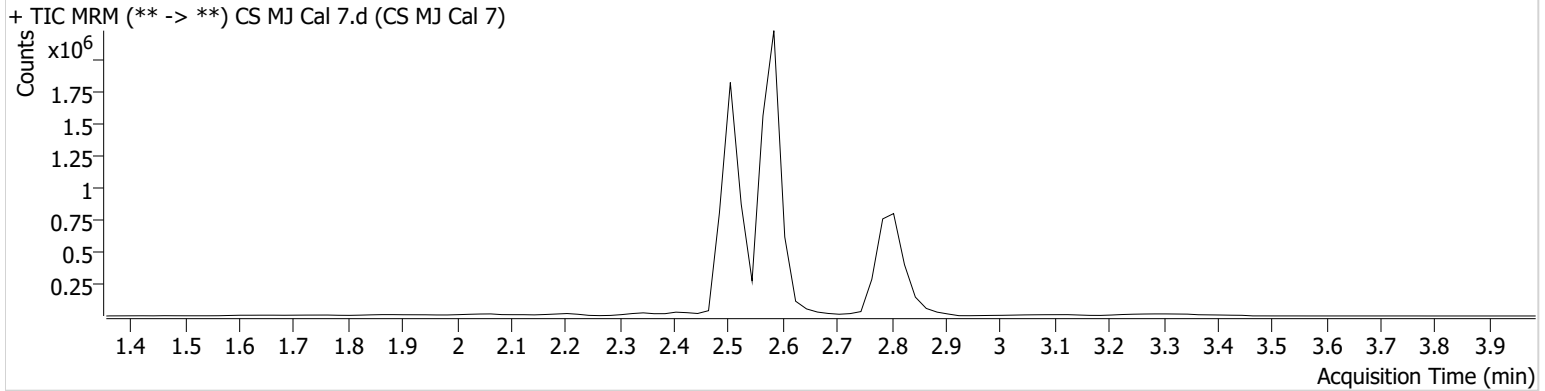


AM #26 Cannabinoids Screen Results

Batch results D:\MassHunter\Data\2021\AM 25-26\060221 AM 25 26 SC\QuantResults\AM 26 CS.batch.bin
Calibration Last Update 6/8/2021 10:26:09 AM

Instrument	Falco (069901)	Data File	CS MJ Cal 7.d
Type	Cal	Sample	CS MJ Cal 7
Acq. Method	AM 26 THCS.m	Operator	Celena Shrum
Sample Position	P5-G1	Comment	
Injection Volume	10		
Acq. Date-Time	6/2/2021 10:49:53 PM		

Sample Chromatogram



Name	RT	Resp.	ISTD Resp.	Final Conc.
THC	2.859	57405	68285	101.6024 ng/ml
THC-COOH	2.587	1856946	487747	253.5513 ng/ml
THC-OH	2.514	302571	1766242	102.2936 ng/ml